

BRAND-NEW SINGLE-PHASE SOLID STATE RELAY KSN SERIES

New generation chip processing technology. More stable structure with higher performance.
Widely used in Plastic Processing Machinery industry.

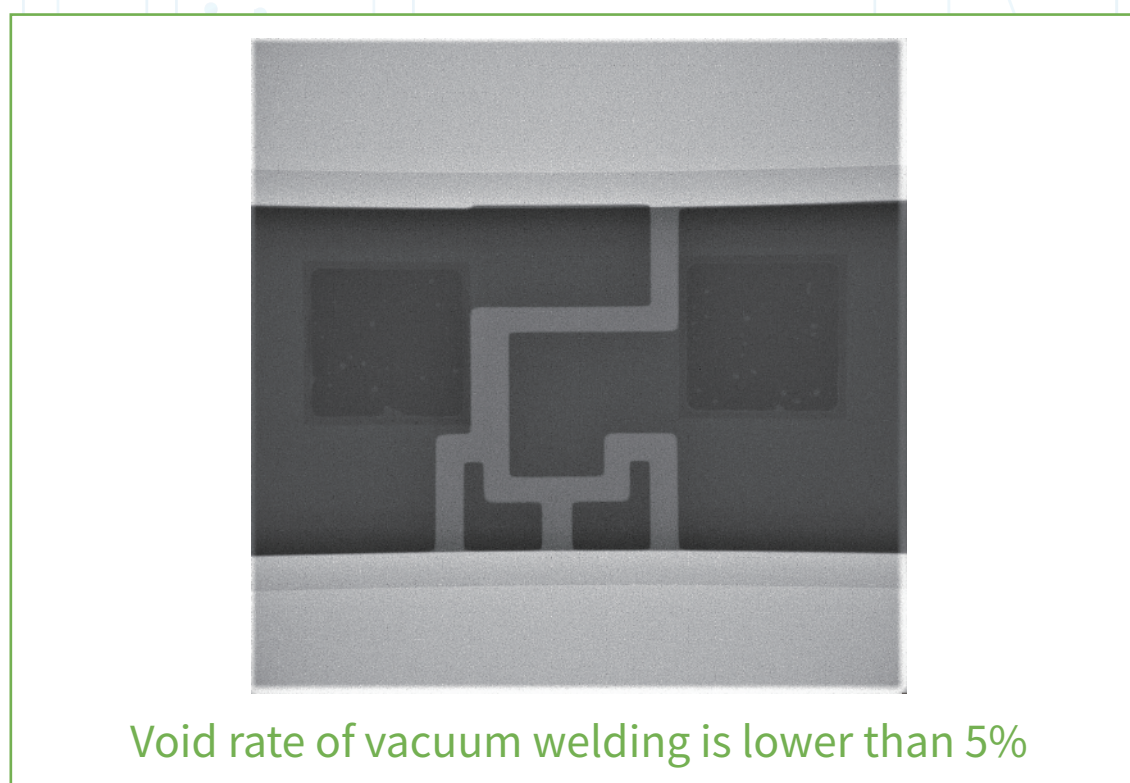


KSN Brief Specifications

- Load Current: 15A ~ 125A
- Load Voltage: 240VAC/380VAC/480VAC/600VAC
- Control Voltage: 3-32VDC / 90-280VAC
- Zero-cross or Random-on Switching
- New generation chip processing technology, IP20 finger proof design
- Build-in TVS or MOV overvoltage protection options

KSN Application Advantages

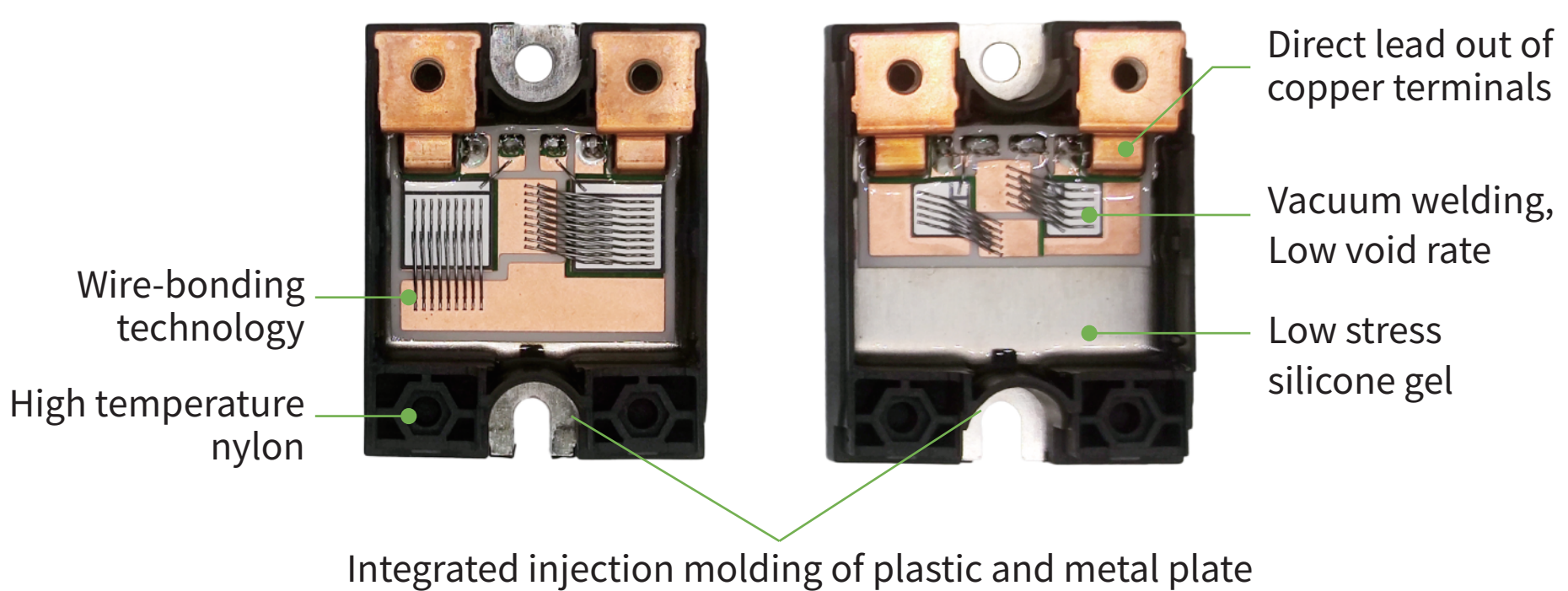
- ◆ KSN outer casing and base plate adopt integrated injection molding process, which makes it stronger and more stable than traditional SSR structure. The outer casing is made of high temperature nylon, which has high melting point exceeds 290°C.
- ◆ Adopt the vacuum welding process to connect the SCR, DBC and base plate. The welding void rate is lower than 5%, which greatly improves the conductivity and heat dissipation performance of the chip.



Void rate of vacuum welding is lower than 5%

- ◆ Adopt wire-bonding technology to process the SCR chip connection, and apply extremely low stress silicone gel to protect the chip, which greatly improves the thermal fatigue resistance.
- ◆ The power components are directly connected with the output terminals, which improves the current carrying capacity and reliability, and greatly reduces the possibility of product burning caused by the abnormal overheating.

• New generation chip processing technology



• Traditional SSR processing



Soldering connect the output terminals on PCB

• Application Example



KSN series solid state relay is widely used in Mold Temperature Controller for heating control.